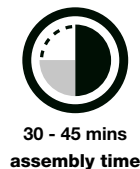




## AluminiumLadder – lightweight, stylish & strong

The Rhino AluminiumLadder combines strength and style, to provide one of the most aesthetically pleasing roof access products available for commercial vehicles. By utilising highly robust aluminium hand rails and glass filled nylon rungs, the AluminiumLadder offers an extremely lightweight solution. The AluminiumLadder is available in 6, 7 and 8 rung configurations with bespoke fitting kits to suit a variety of popular commercial vehicles.



## DIMENSIONS

Part Code	L1	W1	D1
AL6 (6 rung ladder)	1445mm	313mm	77mm
AL7 (7 rung ladder)	1719mm	313mm	77mm
AL8 (8 rung ladder)	1993mm	313mm	77mm

## ULTRA LIGHTWEIGHT DESIGN

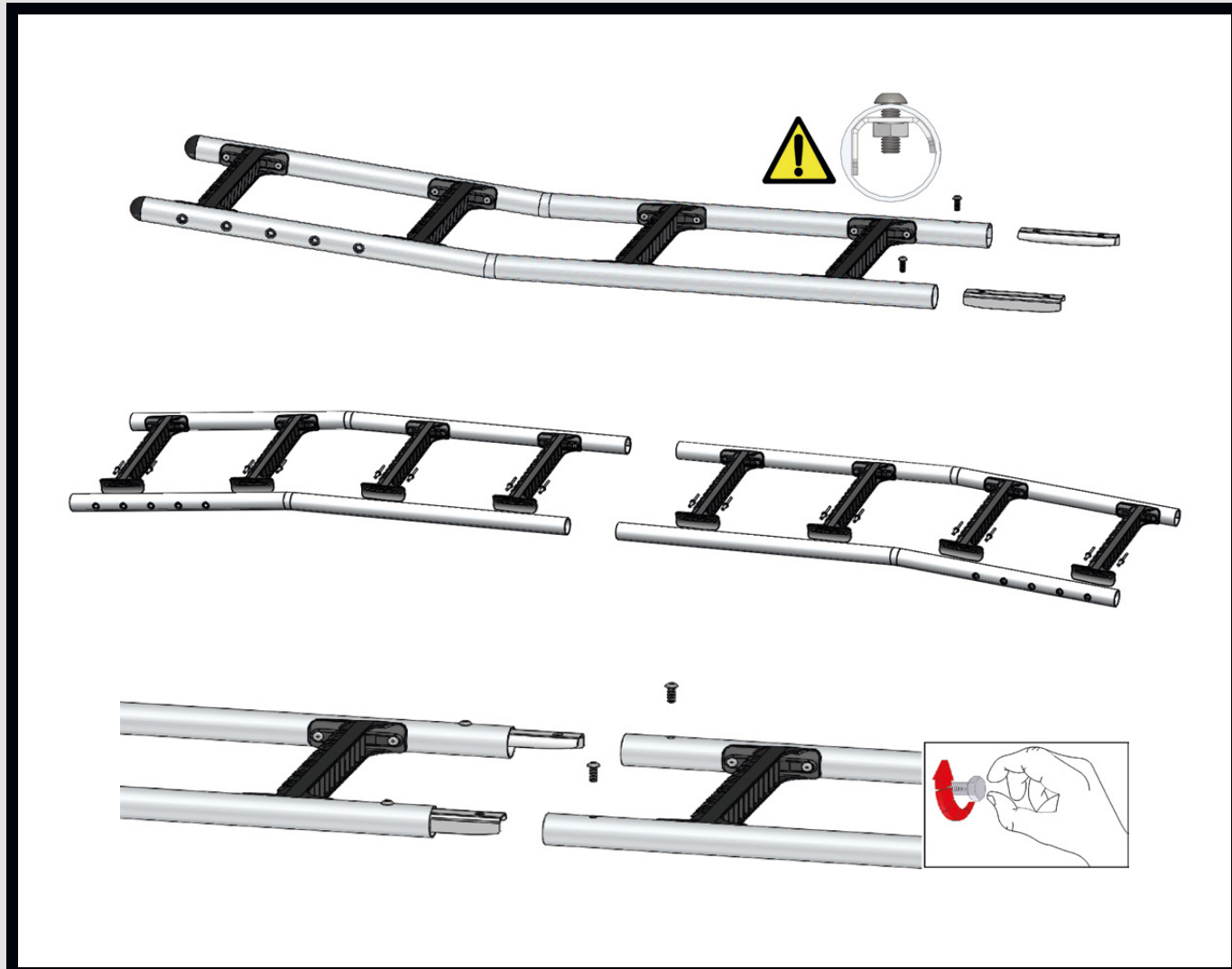
With improving fuel efficiency an ever-increasing concern for commercial vehicle users, our team of inhouse engineers have designed the AluminiumLadder to be as lightweight as possible, without losing any of its strength. Each model is more than 50% lighter than Rhino's old steel ladders\*, and has been rigorously tested to a safe working load of 120kg per ladder both at our inhouse test facility and via professional external accreditation bodies.

\*note this excludes the fitting kit weights which may vary.

Part Code	Weight
AL6 (6 rung ladder)	2.15kg
AL7 (7 rung ladder)	2.53kg
AL8 (8 rung ladder)	3.05kg

## ALUMINIUM LADDER SPLIT FRAME

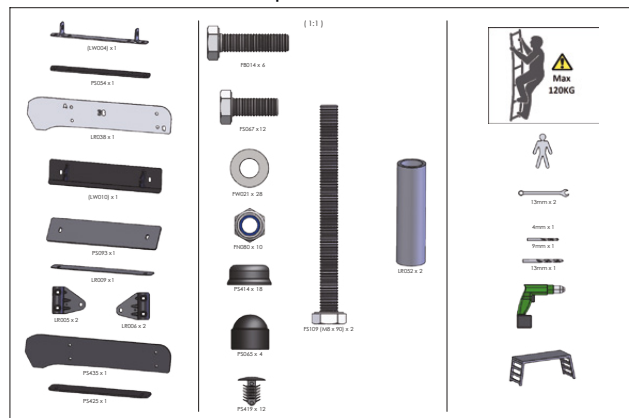
The 8 rung ladder side rails will be split in two parts (as shown below), which can be easily joined via a provided connecting mandrel. The 6 and 7 rung ladders come with side rails which are supplied as complete single pieces.



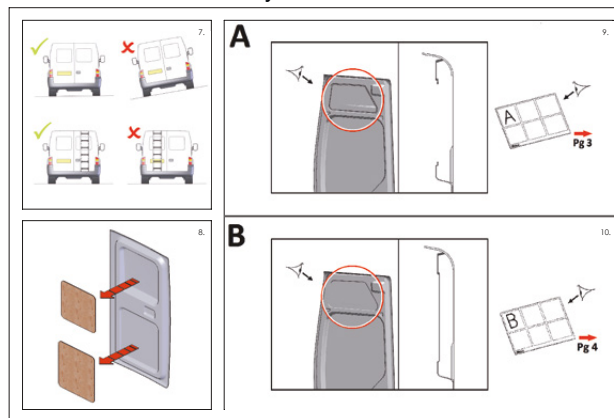
## FITTING INSTRUCTIONS

The Rhino AluminiumLadder comes as standard with a full detailed parts itinerary and bespoke fitting instructions as standard.

### Component Sheet



### Assembly Instruction Sheet



## FEATURES

### EASY GRIP ALUMINIUM SIDE RAILS



- The new Aluminium side rails offer safe working and easy roof access.
- Aluminium and composite materials to reduce corrosion and increase product life.

### ANTI-SLIP LADDER RUNGS



- Specially designed treads for grip in adverse weather conditions.
- Aesthetically improved design.
- 120kg load capacity.

### NEW ROBUST BRACKETS



- The new fitting kit brackets have been redesigned to sit flush within the curvature of the rear door, helping to reduce any temporary deformation.
- Our technical team have designed additional support pads that are fitted to the outside of the rear door to improve strength, particularly for vehicles with thin profile doors.



## INDEPENDENTLY TESTED

The AluminiumLadder has been independently load cycle tested up to 120kg at Millbrook Proving Ground. By utilising highly robust aluminium handrails and glass filled nylon rungs, the AluminiumLadder offers an extremely lightweight but strong solution.



### MATERIAL

### WHERE USED

### ADVANTAGES

#### 6063 T6 Aluminium Alloy

- Ladder side rails

- Light weight
- High strength
- Corrosion resistant
- Scratch resistant

#### Glass Filled Nylon

- Ladder Rungs

- Light weight
- High strength

#### Mild Steel (CR4)

- Powder coated black

- Ladder front mounting bracket
- Ladder rear spreader plate
- Main plate, front ladder bracket
- Rear ladder spreader plate
- Ladder side brackets

- High strength
- Wear resistant
- Corrosion protected

#### Adhesive Backed EPDM

- Mounting rubber
- Universal internal ladder pad
- Mounting rubber, universal ladder bracket

#### Fixings

- M8 x 30mm Hex Head Screw
- M8 x 20mm A2 Hex Head Screw
- M8 B Washer
- M8 Type T Nut
- M8 Snap-on Bolt Protection Cap
- M8 Nut Cover
- Black Nylon Fir Tree Rivets 6.4mm

#### Tools required for installation

- 13mm spanner x 2
- Drill x 1

- Screwdriver x 1

- Step x 1

